



RENEW SAFETY

POWER PRODUCTION - CONSTRUCTION - INDUSTRIAL

Qualified Electric Worker

Participants learn how to recognize electrical hazards, assess risks, and apply safe work practices when working on or near energized electrical equipment.



WWW.RENEWENERGY.COM

OUR COURSE OVERVIEW

This instructor-led training equips participants with the knowledge required to safely perform electrical work on or near energized equipment.

Participants learn how electrical hazards such as shock, arc flash, and arc blast can occur during electrical tasks. The training explains how these hazards develop and how proper procedures help reduce risks when performing electrical maintenance, troubleshooting, or installation work.

Safety training is most effective when workers understand both the hazards and the procedures required to control them. This course combines regulatory knowledge with practical workplace guidance to support safer electrical work practices.

The course also explains how to establish electrically safe working conditions before performing electrical tasks. Workers learn how to apply safety controls, follow safe work practices, and use protective equipment when working with energized systems.

Through regulatory guidance and practical instruction, participants gain the knowledge required to recognize electrical hazards and apply safer procedures in real job environments.



KEY LEARNING OBJECTIVES

What You Will Learn

- Recognize electrical hazards including shock, arc flash, and arc blast
- Perform electrical risk assessments and apply the hierarchy of risk controls
- Establish and verify electrically safe working conditions
- Determine safe approach boundaries and select appropriate PPE
- Understand energized work permits and justified energized work procedures
- Comply with lockout/tagout and electrical maintenance requirements
- Respond effectively to electrical emergencies

Together, these learning objectives help participants understand electrical hazards and the procedures required to perform electrical work safely.



Electrical Hazards in Real Work Environments

Participants learn how energized equipment, electrical panels, and power distribution systems can create hazards during maintenance or troubleshooting tasks. Understanding these hazards helps workers recognize risks before performing electrical work.

Establishing Safe Electrical Work Practices

The course explains how to establish electrically safe working conditions by applying risk assessments, lockout/tagout procedures, and protective measures before performing electrical tasks.

COURSE DETAILS

Prerequisites

Participants who successfully complete the course, including required assessments or demonstrations, receive a Certificate of Completion valid for three years. Retraining may be required when job duties change, new hazards are introduced, or safety compliance issues are identified.

Certification

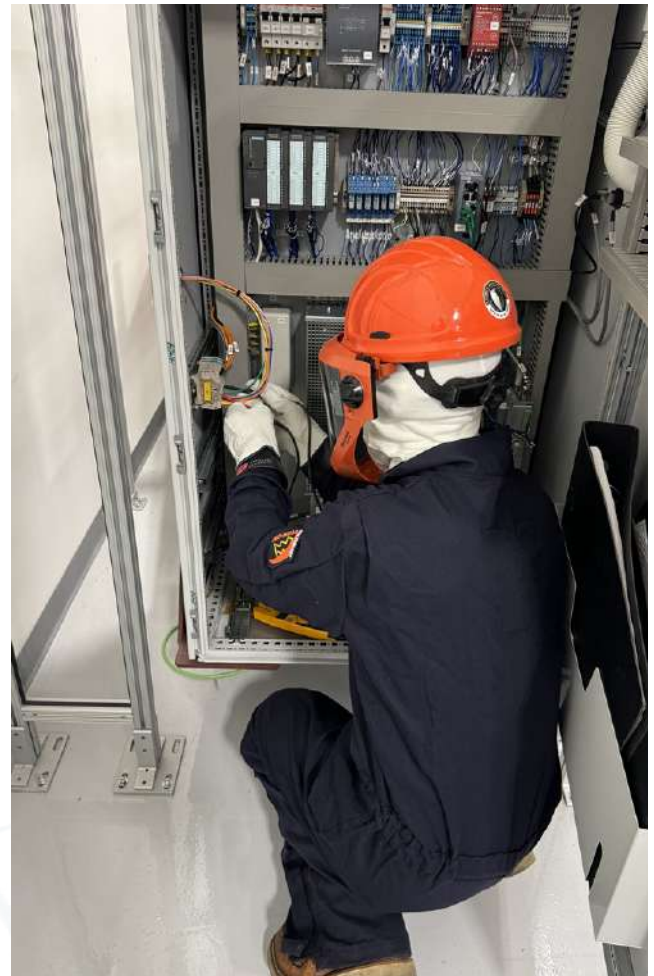
Participants who successfully complete the course, including required assessments or demonstrations, receive a Certificate of Completion valid for three years. Retraining may be required when job duties change, new hazards are introduced, or safety compliance issues are identified.

Compliance

This course aligns with OSHA 29 CFR 1910.331 - 1910.335 Electrical Safety-Related Work Practices and the NFPA 70E Standard for Electrical Safety in the Workplace.

Target Audience

This course is intended for maintenance personnel, electricians, mechanics, technicians, and workers who perform troubleshooting, installation, testing, or maintenance on energized electrical systems or equipment. It is also relevant for supervisors, safety professionals, and managers responsible for overseeing electrical work or ensuring compliance with electrical safety standards.



Course Code:

ELEC-QEW-102

Format:

Instructor-Led & Field-Focused

Duration:

16 hrs initial / 8 hrs refresher

WHY TAKE THIS COURSE?

The Importance of Electrical Safety Training

- Electrical hazards such as shock, arc flash, and arc blast can cause severe injuries or fatalities which can be avoided through training.
- Workers who understand electrical hazards are better prepared to prevent such incidents from occurring.
- Proper training helps ensure safe work practices when working on energized systems.

Confined space rescue training prepares workers to respond safely and effectively during emergencies. By understanding hazards, rescue planning requirements, and proper response procedures, organizations can reduce risks and ensure rescue operations are performed safely.

Preparing Workers for Electrical Work

This course prepares workers to perform electrical tasks safely by teaching hazard recognition, risk assessment methods, and safe electrical work procedures.

Training improves preparedness by ensuring workers understand electrical hazards, approach boundaries, and the protective equipment required when working on energized equipment.

Supporting Safety Compliance

Electrical safety training helps organizations meet OSHA and NFPA 70E safety requirements. Employers must ensure workers performing electrical tasks understand hazards, follow proper procedures, and use appropriate protective equipment when working near energized systems.





RENEW SAFETY

POWER PRODUCTION - CONSTRUCTION - INDUSTRIAL



info@renewsafety.com



(503) 849 2237

Contact us to learn more about course availability, group training, and customized fall rescue instruction.

WWW.RENEWENERGY.COM

