



**RENEW SAFETY**  
POWER PRODUCTION - CONSTRUCTION - INDUSTRIAL

# Entry Supervisor Training

Participants learn how entry supervisors oversee confined space operations by authorizing entry permits, verifying hazard controls, and ensuring workers follow safe confined space entry procedures in industrial and construction environments.



[WWW.RENEWSAFETY.COM](http://WWW.RENEWSAFETY.COM)

# OUR COURSE OVERVIEW

**This comprehensive course provides essential training for supervisors responsible for managing confined space entry operations and ensuring safe work practices.**

Participants learn how to identify confined space hazards and confirm that required safety precautions are in place before workers enter confined spaces in workplaces.

Safety training is most effective when supervisors understand both the hazards and the procedures used to control them. This course combines regulatory knowledge with practical workplace guidance to help organizations maintain safe confined space entry practices.

The course explains procedures required for safe confined space entry, including permit authorization, hazard assessments, atmospheric testing verification, and coordination with entrants and attendants.

Through practical instruction and regulatory guidance, participants gain the knowledge required to supervise confined space work and maintain safe working conditions during entry operations.



# KEY LEARNING OBJECTIVES

## What You Will Learn

- Understand confined space entry permit requirements and supervisor responsibilities.
- Identify confined space hazards and atmospheric risks.
- Authorize confined space entry permits before work begins.
- Verify hazard controls such as ventilation and gas monitoring.
- Ensure communication between all entrants, attendants, and rescue personnel.
- Monitor confined space operations and enforce safety procedures.
- Apply supervisory responsibilities during confined space work scenarios.

Together, these key learning objectives help participants understand confined space hazards and the procedures required to supervise safe and compliant entry operations.



## Confined Space Hazard Awareness

Participants learn how confined spaces such as tanks, silos, vaults, and pits may contain hazardous atmospheres, limited ventilation, or restricted entry and exit points. Training focuses on recognizing these hazards and verifying that proper safety controls are implemented before entry occurs.

## Entry Supervision and Safety Practices

The course explains how entry permits, atmospheric monitoring, ventilation systems, and communication procedures work together to protect workers during confined space operations. Participants learn how supervisors verify safety measures and ensure that confined space procedures are followed throughout the work process.

# COURSE DETAILS

## Prerequisites

No prior confined space supervision experience is required for this course, although basic knowledge of workplace safety procedures is recommended. Participants should be familiar with general industrial or construction work activities where confined space operations may occur.

## Certification

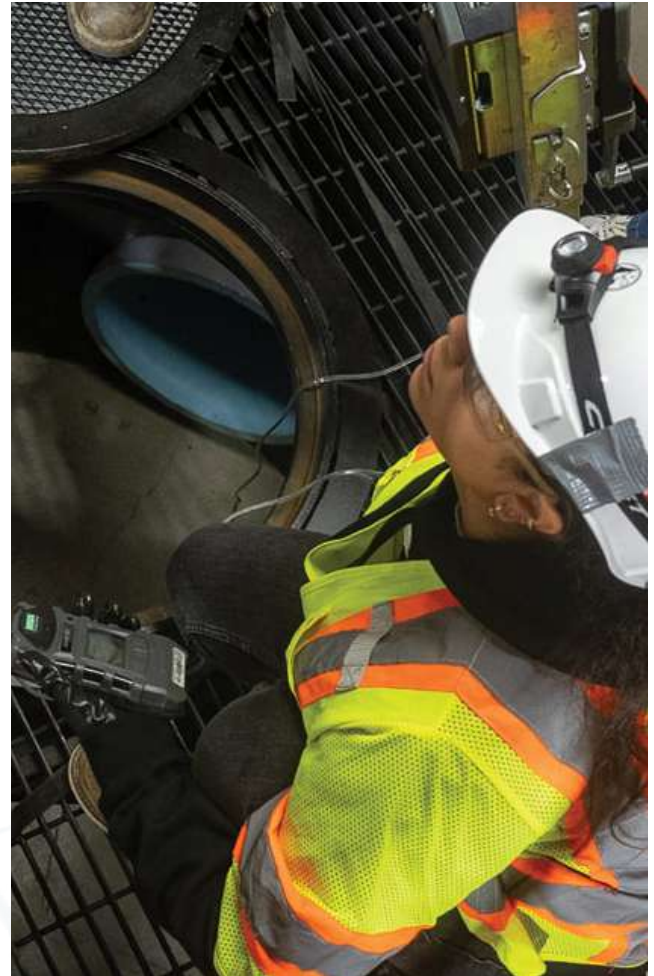
Upon successful completion, participants receive a certificate of completion demonstrating training in confined space supervision and entry permit management responsibilities.

## Compliance

This course aligns with OSHA 29 CFR 1910.146 – Permit-Required Confined Spaces, covering supervisor responsibilities, entry permit procedures, hazard identification, atmospheric monitoring, and worker safety requirements.

## Target Audience

This course is intended for supervisors, safety personnel, foremen, project leaders, and other individuals responsible for overseeing confined space entry operations and ensuring that workers follow safe confined space procedures in industrial or construction environments.



**Course Code:**

N/A

**Format:**

N/A

**Duration:**

N/A

# WHY TAKE THIS COURSE?

## The Importance of Entry Supervisor Training

- Confined spaces can contain hazardous atmospheres or restricted entry conditions that pose serious risks to workers.
- Entry supervisors play a critical role in verifying safety procedures before workers enter confined spaces.
- Training ensures supervisors understand how to authorize permits and enforce confined space safety procedures.

Entry supervisor training helps organizations reduce risks associated with confined space operations. By understanding permit systems, hazard controls, and supervision responsibilities, supervisors can ensure safe working conditions during confined space entry activities.

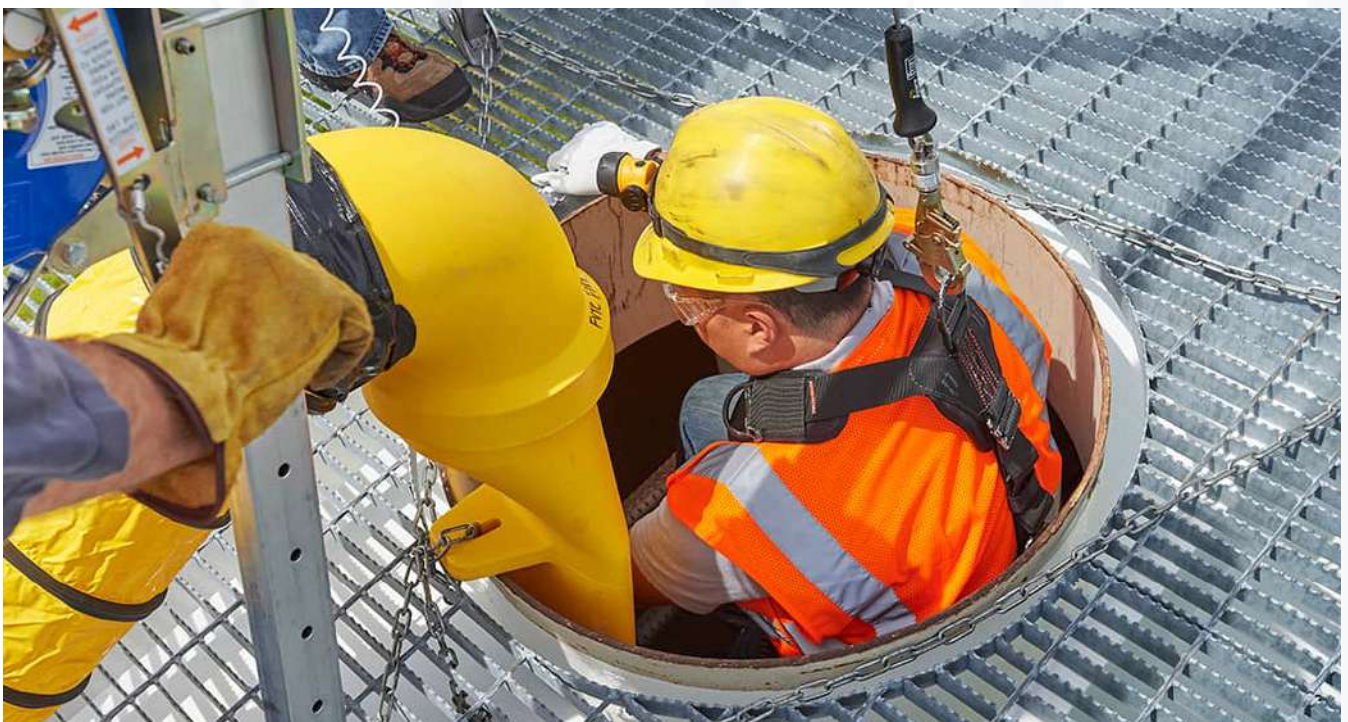
## Preparing Teams for Confined Space Operations

This course provides practical training that helps supervisors understand confined space hazards and their responsibilities during entry operations.

Training improves preparedness by ensuring supervisors understand hazard assessments, permit procedures, and monitoring requirements during confined space operations.

## Supporting Safety Compliance

Confined space supervisor training helps organizations meet OSHA confined space safety requirements. Employers must ensure supervisors understand entry permits, hazard control procedures, and safe work practices for confined space operations.





# RENEW SAFETY

POWER PRODUCTION - CONSTRUCTION - INDUSTRIAL



[info@renewsafety.com](mailto:info@renewsafety.com)



(503) 849 2237

Contact us to learn more about course availability, group training, and customized fall rescue instruction.

[WWW.RENEWSAFETY.COM](http://WWW.RENEWSAFETY.COM)

