



**RENEW SAFETY**

POWER PRODUCTION - CONSTRUCTION - INDUSTRIAL

# Data Center Safety

Participants learn how safety procedures are applied in data center environments to reduce workplace hazards related to equipment handling, lifting, electrical infrastructure, and facility operations.



[WWW.RENEWSAFETY.COM](http://WWW.RENEWSAFETY.COM)

# OUR COURSE OVERVIEW

**This comprehensive course provides essential training for employees working in or around data center environments where equipment handling, electrical infrastructure, and facility operations create potential workplace hazards.**

Participants learn how to recognize common safety risks associated with data center operations including equipment movement, lifting tasks, electrical infrastructure, and environmental conditions within technical facilities.

Safety training is most effective when workers understand both the hazards and the procedures used to control them. This course combines safety awareness with practical workplace guidance to help other organizations maintain safer data center environments.

The course explains safety procedures used to prevent injuries such as proper lifting practices, use of protective equipment, safe equipment handling, and maintaining organized workspaces.

Through practical instruction and safety awareness, participants gain the knowledge required to identify risks and follow procedures that support safe operations inside data centers.



# KEY LEARNING OBJECTIVES

## What You Will Learn

- Recognize common hazards associated with data center equipment and infrastructure.
- Identify risks related to lifting heavy IT hardware and equipment movement.
- Understand proper equipment handling and safe lifting practices.
- Follow workplace safety procedures used in technical facilities.
- Identify personal protective equipment used during maintenance activities.
- Recognize environmental hazards such as noise, temperature, and electrical risks.
- Apply safe work practices when working around data center equipment.

Together, these key learning objectives help participants understand workplace hazards and the safety practices used to prevent injuries in data center environments.

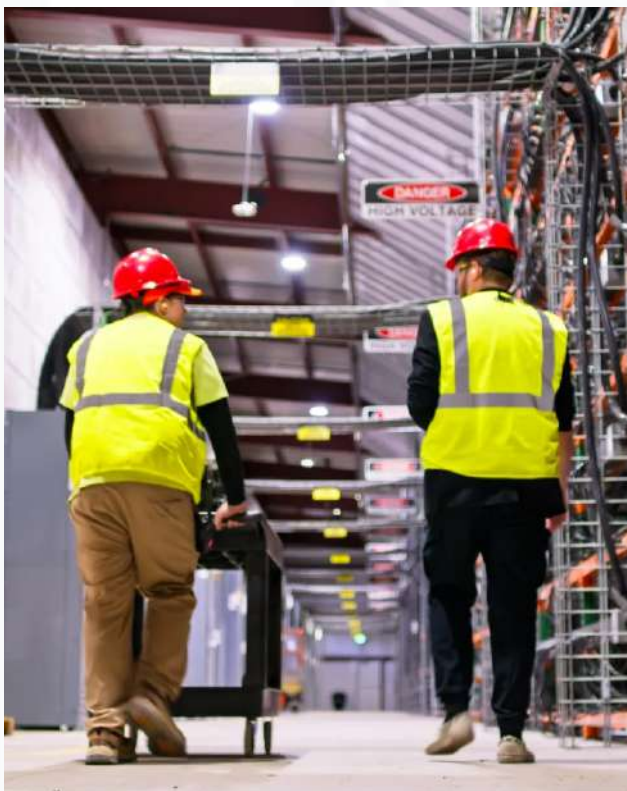


## Data Center Hazard Awareness

The course explains how equipment shutdown, isolation devices, lock placement, and energy verification procedures work together to prevent unexpected equipment startup. Participants learn how proper lockout/tagout practices protect all workers during maintenance and servicing tasks.

## Safe Work Practices in Data Centers

The course explains how proper equipment handling, workplace organization, and safe lifting practices help prevent injuries and equipment damage. Participants learn how safety procedures support efficient and secure operations within data center environments.



# COURSE DETAILS

## Prerequisites

No prior data center experience is required for this course, although basic familiarity with workplace safety practices and technical environments is recommended. Participants should understand general equipment handling and workplace safety procedures.

## Certification

Upon successful completion, participants receive a certificate of completion demonstrating training in data center safety awareness and workplace safety practices.

## Compliance

This course supports general workplace safety practices commonly applied in technical and data center environments. Training helps workers understand hazard awareness, equipment handling procedures, and safe work practices used to maintain safe operations.

## Target Audience

This course is intended for IT technicians, data center personnel, maintenance staff, contractors, and facility operators who work around servers, electrical infrastructure, and technical equipment. It also benefits supervisors and support staff responsible for maintaining safe working conditions in data center environments.



**Course Code:**

N/A

**Format:**

N/A

**Duration:**

N/A

# WHY TAKE THIS COURSE?

## The Importance of Data Center Safety Training

- Data center environments contain equipment, electrical systems, and lifting tasks that can create workplace safety risks.
- Proper safety procedures help prevent injuries related to heavy equipment handling and facility operations.
- Training helps workers recognize hazards and apply safe work practices in technical environments.

Data center safety training helps workers recognize workplace hazards and apply procedures that reduce the risk of injury and equipment damage. By understanding safe equipment handling, lifting practices, and workplace safety guidelines, employees can perform their tasks more safely.

## Preparing Teams for Safe Operations

This course provides practical training that helps workers understand hazards associated with data center equipment and facility operations. Participants learn how to follow safe work procedures when handling equipment and performing technical tasks.

Training improves preparedness by ensuring workers understand hazard awareness, safe lifting practices, and responsible workplace behavior.

## Supporting Safety Compliance

Data center safety training helps organizations maintain safe working environments for employees and contractors. Employers must ensure workers understand safety procedures, equipment handling practices, and workplace hazard awareness when working in data center facilities.





# RENEW SAFETY

POWER PRODUCTION - CONSTRUCTION - INDUSTRIAL



[info@renewsafety.com](mailto:info@renewsafety.com)



(503) 849 2237

Contact us to learn more about course availability, group training, and customized fall rescue instruction.

[WWW.RENEWSAFETY.COM](http://WWW.RENEWSAFETY.COM)

