



RENEW SAFETY
POWER PRODUCTION - CONSTRUCTION - INDUSTRIAL

Arc Flash Hazard

Workers learn how to recognize electrical hazards, reduce arc flash risks, and apply safe work practices when working on or near energized electrical equipment in industrial and construction environments.



WWW.RENEWSAFETY.COM

OUR COURSE OVERVIEW

This instructor-led training focuses on recognizing, assessing, and controlling arc flash hazards in the workplace. The course explains how electrical incidents occur and how workers can prevent them.

Participants learn how OSHA electrical safety regulations and NFPA 70E requirements apply to real work environments. The training provides practical guidance on hazard identification, risk assessment, and establishing electrically safe work conditions before maintenance or troubleshooting activities begin.

Electrical safety training is most effective when workers understand the risks present in their daily work environments. This course prepares participants to recognize electrical hazards and apply safe work practices that support compliance with OSHA and NFPA 70E standards.

Our programs support organizations that require reliable safety training for electricians, maintenance teams, and supervisors responsible for electrical work. The course emphasizes safe decision-making, hazard awareness, and proper use of protective equipment when working around energized systems.

By combining regulatory guidance with practical safety procedures, this training helps organizations reduce electrical incident risks, strengthen workplace safety programs, and ensure workers understand how to control arc flash hazards on the job.



KEY LEARNING OBJECTIVES

What You Will Learn

- Identify electrical hazards such as arc flash, arc blast, shock, and electrocution
- Understand the causes and the potential consequences of arc flash incidents
- Explain the relationship between OSHA electrical safety standards and NFPA 70E requirements
- Determine approach boundaries and establish electrically safe work conditions
- Select appropriate personal protective equipment and arc-rated clothing
- Apply and implement safe work practices including lockout/tagout and job briefings.
- Understand procedures for energized work permits and hazard controls

Together, these learning objectives help workers develop the knowledge required to recognize electrical hazards and apply safe work practices when working on or near energized equipment.



Electrical Hazard Awareness in Real Work Environments

Participants learn how electrical systems in industrial facilities, construction sites, and power distribution environments can create arc flash hazards. The course explains how equipment condition, improper work practices, and environmental factors influence electrical risk levels.

Arc Flash Risk Prevention

This training explains how arc flash incidents develop and teaches workers how to reduce exposure by following proper work practices, using appropriate PPE, and establishing safe working distances when interacting with energized electrical equipment.

COURSE DETAILS

Prerequisites

Participants should have a basic understanding of electrical systems and workplace safety before attending the course. Familiarity with electrical equipment labels, hazard warnings, and standard safety procedures is recommended but not required.

Certification

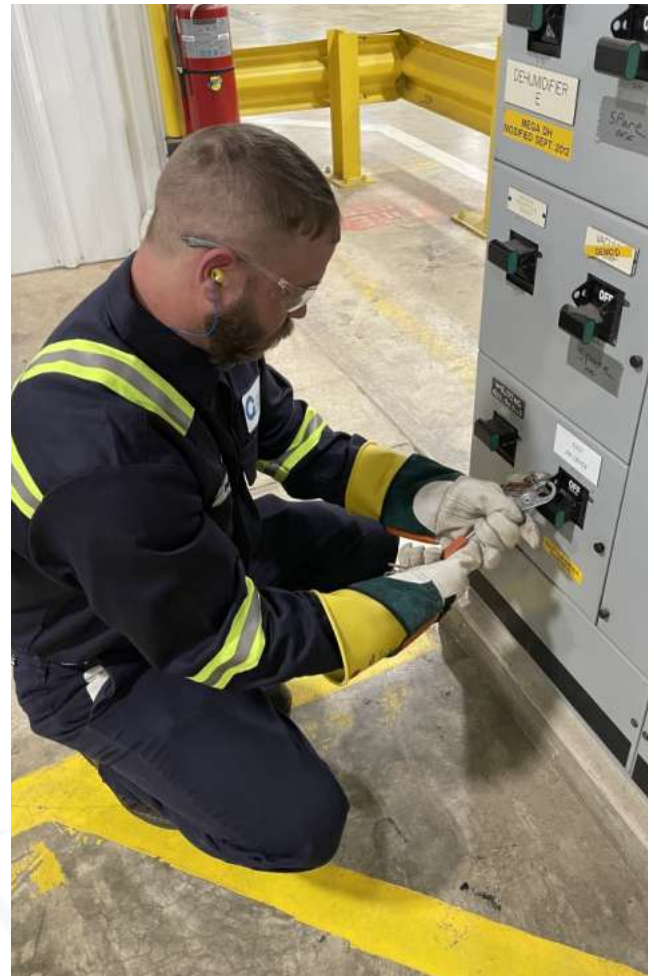
Participants receive a certificate of completion after successfully meeting course requirements. Certification additionally supports documentation requirements for electrical safety training under OSHA and NFPA 70E guidelines.

Compliance

This course aligns with OSHA 29 CFR 1910.333 and 1910.335 requirements and the latest NFPA 70E standard, covering electrical hazard recognition, risk assessment, personal protective equipment, and safe work practices for energized electrical equipment.

Target Audience

This course is intended for electricians, maintenance technicians, engineers, supervisors, facility managers, and personnel who work on or near energized electrical equipment.



Course Code:

ELEC-ARC-103

Format:

Instructor-Led Training

Duration:

~2-3 hrs

WHY TAKE THIS COURSE?

The Importance of Arc Flash Safety

- Arc flash events can release temperatures exceeding 35,000°F, causing great equipment damage, and life-threatening injuries..
- Proper electrical safety training helps workers recognize hazardous conditions and therefore maintain safe working distances
- Clear safety procedures and protective equipment help workers safely perform tasks near energized electrical systems

Organizations that train their teams to recognize electrical hazards are better prepared to prevent incidents and maintain safe working conditions. Electrical safety awareness helps workers identify hazards before beginning maintenance, troubleshooting, or inspection tasks.

Preparing Teams for Electrical Work Environments

A structured electrical safety program helps workers understand how to safely perform tasks near energized equipment. Training improves awareness of electrical hazards and teaches workers how to apply proper safety procedures before beginning work.

By preparing workers before incidents occur, organizations improve response time and ensure that injured employees receive immediate care.

Supporting Safety Compliance

Electrical safety training supports compliance with OSHA regulations and NFPA 70E standards that require employers to protect workers from electrical hazards. Proper training ensures workers understand electrical risks and follow safe work practices when working near energized equipment.





RENEW SAFETY

POWER PRODUCTION - CONSTRUCTION - INDUSTRIAL



info@renewsafety.com



(503) 849 2237

Contact us to learn more about course availability, group training, and customized fall rescue instruction.

WWW.RENEWSAFETY.COM

