



RENEW SAFETY

POWER PRODUCTION - CONSTRUCTION - INDUSTRIAL

Affected Employee Training

Participants learn how affected employees work safely around equipment that is being serviced or maintained under lockout/tagout procedures. The course explains how hazardous energy control protects workers.



WWW.RENEWSAFETY.COM

OUR COURSE OVERVIEW

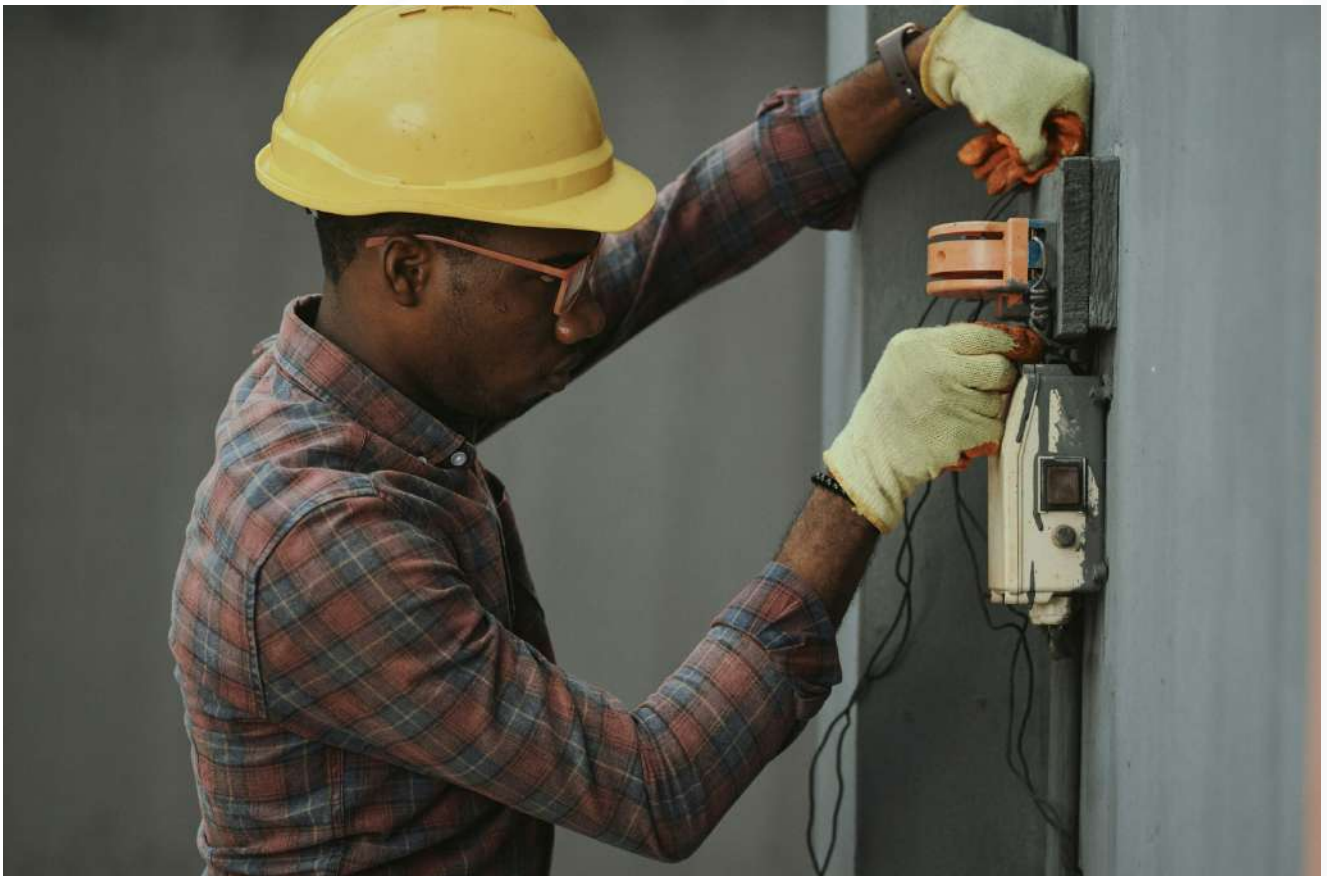
This course provides essential training for workers who operate equipment or work in areas where lockout/tagout procedures are applied during equipment servicing.

Participants learn how hazardous energy can create risks when equipment is being repaired or maintained. The training explains how lockout/tagout procedures protect workers from unexpected equipment startup or energy release.

Safety training is most effective when workers understand both the hazards and the procedures used to control them. This course combines regulatory knowledge with workplace practices that support safe operations around equipment being serviced.

The course explains the role of affected employees and how they must recognize lockout devices, tags, and equipment isolation procedures when maintenance activities are underway.

Participants also learn how to respond when lockout/tagout procedures are applied, including understanding restricted equipment use and respecting energy control practices implemented by authorized employees.



KEY LEARNING OBJECTIVES

What You Will Learn

- Understand OSHA lockout/tagout awareness requirements for affected employees.
- Recognize the purpose of lockout devices and energy control procedures.
- Identify equipment that has been locked or tagged out for maintenance.
- Understand responsibilities of affected employees during servicing activities.
- Recognize hazardous energy risks around equipment and machinery.
- Follow safe practices when working near locked or isolated equipment.
- Understand how lockout/tagout procedures protect workers from injury.

Together, these key learning objectives help participants understand hazardous energy risks and the responsibilities of affected employees when lockout/tagout procedures are applied during equipment servicing and maintenance.



Hazardous Energy Awareness

Participants learn how different forms of hazardous energy—such as electrical, mechanical, hydraulic, pneumatic, and thermal energy—can create risks when equipment is serviced. The training focuses on recognizing these hazards and understanding why energy must be controlled during maintenance work.

Lockout/Tagout Awareness and Workplace Safety

The course explains how lockout devices, warning tags, and equipment isolation procedures work together to prevent unexpected startup. Workers learn how affected employees must respond when lockout/tagout procedures are applied and how these practices protect everyone in the workplace.

COURSE DETAILS

Prerequisites

No prior lockout/tagout experience is required for this course. Participants should have a basic understanding of workplace safety practices and be familiar with equipment used in their work environment.

Certification

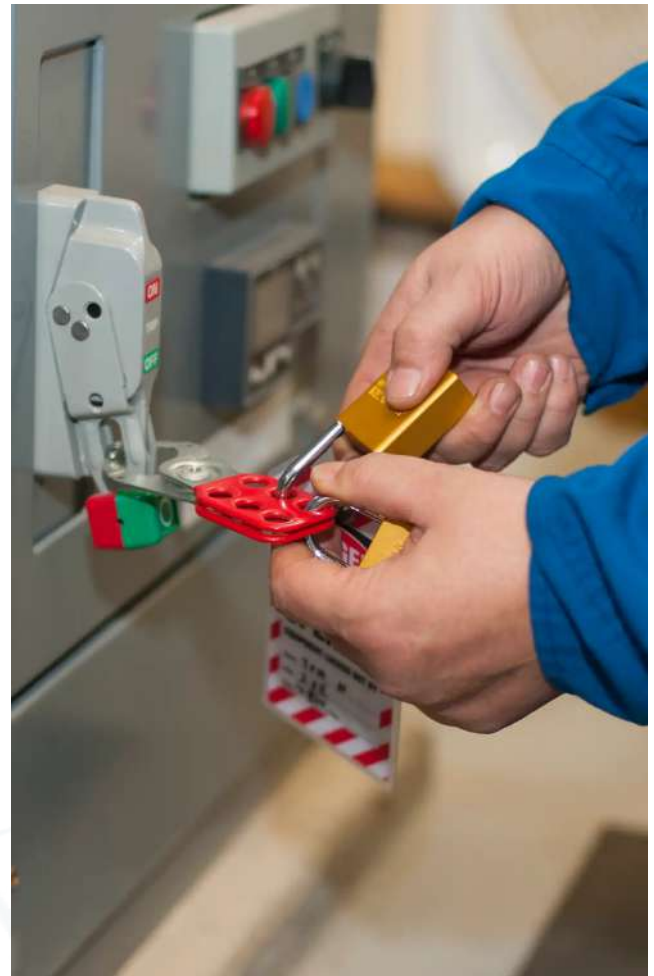
Participants receive a certificate of completion confirming awareness training related to hazardous energy control and lockout/tagout safety practices for affected employees.

Compliance

This course aligns with OSHA 29 CFR 1910.147 – The Control of Hazardous Energy (Lockout/Tagout), which requires affected employees to understand the purpose and use of energy control procedures used during equipment servicing and maintenance.

Target Audience

This course is intended for machine operators, production workers, equipment users, and other employees who work in areas where lockout/tagout procedures are applied but who do not perform the lockout procedures themselves.



Course Code:

N/A

Format:

N/A

Duration:

N/A

WHY TAKE THIS COURSE?

The Importance of Lockout/Tagout Awareness

- Equipment servicing can expose workers to hazardous energy if proper controls are not followed.
- Lockout/tagout procedures prevent unexpected equipment startup during maintenance in workplaces
- Awareness training helps affected employees recognize and respect the energy control procedures.

Affected employee training helps the workers understand how hazardous energy control protects them during maintenance operations. By recognizing lockout devices, tags, and restricted equipment, workers can safely operate in areas where servicing activities are taking place.

Preparing Workers for Safe Equipment Operations

This course provides practical instruction that helps workers understand how lockout/tagout procedures affect normal equipment operations. Participants learn how to recognize locked or isolated equipment and follow safe practices while maintenance work is in progress. Training improves preparedness by ensuring workers understand when equipment cannot be operated and how to work safely around machines undergoing servicing.

Supporting Safety Compliance

Lockout/tagout awareness training also helps organizations meet OSHA hazardous energy control requirements. Employers must ensure affected employees understand the purpose of energy control procedures and how these practices protect workers during equipment servicing.





RENEW SAFETY

POWER PRODUCTION - CONSTRUCTION - INDUSTRIAL



info@renewsafety.com



(503) 849 2237

Contact us to learn more about course availability, group training, and customized fall rescue instruction.

WWW.RENEWSAFETY.COM

